

"PATIENCE IS THE SECOND MIND"



THE
LAST
EMPEROR

"IF WISDOM IS 100 GRAMS, ABDULHAMID HAS 90 GRAMS OF IT, I HAVE 5 GRAMS OF IT AND THE REST OF THE LEADERS AND POLITICIANS HAVE THE REMAINING 5 GRAMS"

OTTO VON BISMARCK
1ST CHANCELLOR OF GERMANY





The Last Emperor of Imperial Era...

*A Caliph Sultan fighting for sustaining his State in a palace
spinned with webs of intrigues...*

An Easterner for Europeans, a Westerner for Easterners...

The Last Emperor, Abdulhamid Han.







THE STORY

*A*s the center of the world history, Ottoman Empire had become the target of the tradesmen and the colonist states whose aim was to establish a global monarchy system. These tradesmen and colonists knew that they wouldn't be able to achieve their goals unless the Ottoman Empire collapses.

During these tough times, it was the 20th year of Abdulhamid on throne and he was busy re-building the Empire. He was planning on a huge move for the state. The railroad between Berlin and Istanbul was already completed. Time for the famous Hejaz Railroad connecting Istanbul to Madinah had arrived. Through this railroad, social and political facilities were going to come along. Not only Muslims would have ease on the Pilgrimage journey but also traders would have ease on delivering their goods.

However, due to traitors inside the palace and even in Abdulhamid's own family getting directives from external enemies to dethrone Abdulhamid, it was becoming impossible to achieve these projects.

Apart from the political difficulties, Abdulhamid Han was facing problems inside his own palace. His wife Lady Bidar and his sister Seniha Sultan never got along well. Their conflicts caused major issues. Seniha Sultan's husband Mahmud Pasha was the biggest traitor in palace and Lady Bidar was asking to replace him with her brother for some duties.

The brave Sultan Abdulhamid, had truly harsh times trying to get rid of all this darkness and reach light. As the real story of real history, "The Last Emperor" is a unique work.





CAST

ABDULHAMID HAN	:	BULENT INAL
LADY BIDAR	:	OZLEM CONKER
SENIHA SULTAN	:	SELEN OZTURK
MAHMUT PASHA	:	HAKAN BOYAV
MELIKE	:	EZGI EYUPOGLU
OMER	:	AKIN AKINOZU
PRINCE ABDULKADIR	:	CAN SIPAHI
YUSUF	:	IBRAHIM KENDIRCI
SENIOR CAPTAIN CELAL	:	UMUT KURT
TAHSİN PASHA	:	BAHADIR YENİSEHİROGLU
HATICE SULTAN	:	GÖZDE KAYA
HIRAM	:	BERKAN SAL
THEODORE HERZL	:	SAYGIN SOYSAL





PRODUCTION TEAM

PRODUCER	:	ES FILM SERDAR OGRETICI YUSUF ESENKAL
EXECUTIVE PRODUCER	:	OZLEM TASPINAR
DIRECTOR	:	SERDAR AKAR
MIX DIRECTOR	:	KEMALETTIN OSMANLI
MUSIC	:	YILDIRAY GURGEN
EFFECTS & CGI	:	DIGIFLAME



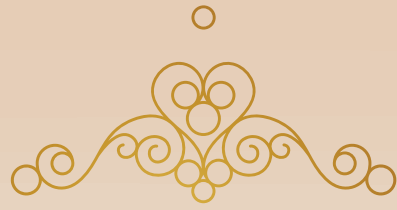


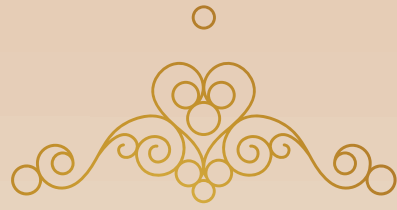
PRODUCTION NOTES

- The Last Emperor is shot in a set consisting of 55.000 square meters of indoor space and 115.000 square meters of outdoor space. In this up-to-date set, some parts of the Yildiz Palace were built exactly same as the original.
- Near 60 sets for Yildiz Palace, Yildiz Mansion, inside of Ciragan Palace, rooms, harem corridors, Ottoman houses and streets, houses for the scenes in Vienna, offices and congress centers were built.
- For the first 3 episodes almost 1000 costumes were made.
- There are nearly 2000 accessories such as hats, shoes and jewels were produced.











SULTAN ABDULHAMID HAN

BULENT INAL

- › The 34th Sultan of the Ottoman Empire;
- › Most powerful Emperor in the 19th century.
- › The 113th Caliph of Islam;
- › Intelligent and has full knowledge of his interests.
- › He is a real patriot.









CHARACTERISTIC

- A poised and an authoritative character
- A 'reformist' Emperor open to innovation and improvement.
- Cautious, staid and attentive
- A wise speaker, an influencer with his charismatic personality, kindness and humanism even towards his enemies.
- Philanthropist, visionary, intellectual, artist and fond of art.
- Avoider of squandering, pursuer of balanced policy. He founded schools spending his own private fortune.

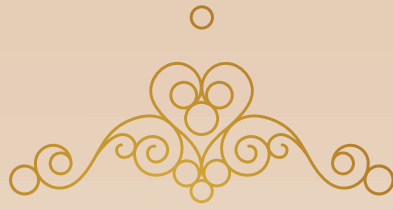




INTELLECTUAL

- All of the Sherlock Holmes works were translated into Ottoman during his period and even the author Sir Arthur Conan Doyle came to Istanbul and visited Abdulhamid Han.
- An enormous library among which 5.000 detective story books took place was built.
- He had a theater stage built in Palace. Most famous opera and plays of the term were acted for Sultan. Well-known Italian actor Ernesto Rossi came to Istanbul on March 12th, 1889 and acted in 'Othello' and 'The Merchant of Venice' by Shekaspeare.





PHILANTROPIST

- He carved 150 walking sticks by himself for the injured soldiers in Greek War and donated to them.
- He contributed science by donating his own income to Pasteur who discovered rabies vaccine.
- He payed off the debts for the prisoners who were only guilty of money loan.
- There is a monument for Abdulhamid Han in Ireland to show their gratitude after all the charity work he did.

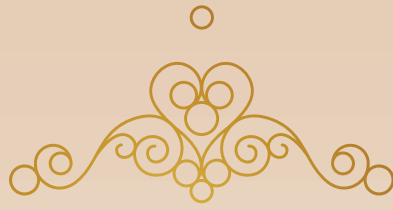




VISIONARY

- During his reign, 5792 km long railroad was built, 1320 km long called Hejaz Railroad crossing Istanbul, Damascus, Medina and Mecca according to current geographical map;
- The founder of the first Turkish Parliament;
- Through Ottoman history, the highest of schools including first school for girls were opened during his period. Thanks to schools he opened, rate of literacy was increased five times.
- He designed the Sub-Sea Tunnel Project going under Bosphorus and connecting Asia Continent to Europe Continent.





ARTISTIC/HOBBIES

- As a carpenter he built his own design objects.
- He established a School of Music in the Palace and his children took piano lessons.
- He had a passion for equestrian, swimming, marksmanship and wrestling.
- He was a collector. His most inspirational collections were for birds and antique weapons.







LADY BIDAR

ÖZLEM CONKER

- › She is the second consort of Abdülhamid and the mother of Prince Abdulkadir.
- › She is a very strong woman. She was influential in her two brothers' becoming pashas in the palace.
- › She dislikes Abdulhamid's sister, Seniha Sultan, serving as Chief Lady during imperial ceremonies, and there is a never-ending power struggle among the two.
- › Madly in love with Abdulhamid;
- › Bidar is extremely worried about the treacheries of Mahmud Pasha.







SENIHA SULTAN

SELEN OZTURK

- The sister of Abdulhamid.
- The center of attention in the palace with her beauty, elegance, and open-mindedness.
- Her marriage to Mahmud Pasha is her biggest misfortune. Yet, she is in love with her husband.
- Torn between her husband and her elder brother, Seniha doesn't get along with Bidar.
- Feeling increasingly pressured by the treachery of Mahmud Pasha, Seniha will help her husband to flee to Europe.







MAHMUD PASHA

HAKAN BOYAV

- The son of Halil Rifat Pasha, who served four times as the Grand Admiral of the Ottoman Navy. He is married to Abdulhamid's sister, Seniha Sultan.
- He is an Anglophile and is a spy for Herzl.
- He schemes with his son to dethrone Abdulhamid. Yet, Seniha is blindly in love with him. Even when she finds out that her husband is a traitor, she will take the risk of standing by him against her family.





THEODORE HERZL

SAYGIN SOSYAL



He has hostile intentions toward the Ottoman Empire. Intent on building a Jewish state in Palestine, an Ottoman territory, Herzl is trying everything he can to accomplish this goal.

However,
his failure in this regard will anger the great powers,
and he will join the ranks of an anti-Ottoman conspiracy.





MELIKE (AHSEN)

EZGI EYUBOGLU



Having lost her memory during an attempt on Abdulhamid's life, Melike has been taken under the wings of the Sultan at the palace. Ömer, who saved the Sultan from a certain death, Ömer's close friend Yusuf, and Prince Abdulkadir are all in love with Melike.

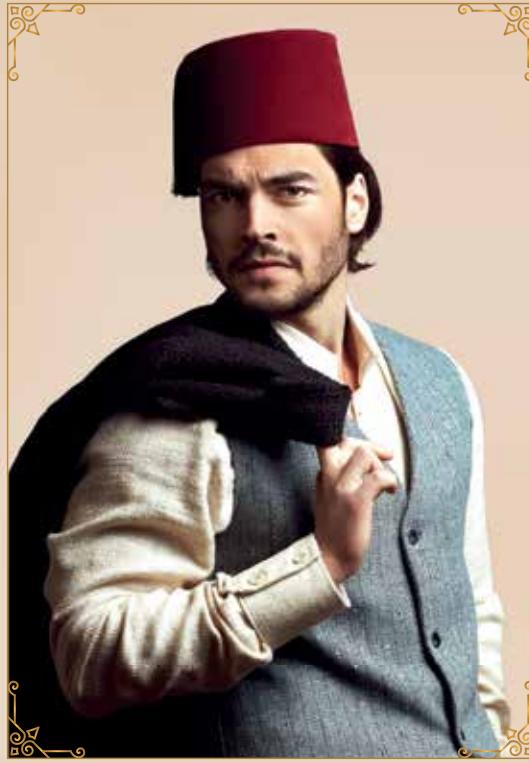
Melike will unintentionally cause many palace intrigues with her beauty and innocence.





OMER

AKIN AKINOZU



He saves the Sultan from assassination and earns his trust. He falls in love with Melike who got wounded during the assassination attempt.

Ömer will help Abdülhamid in revealing his enemies.

Prince Abdulkadir's love for Melike is Ömer's biggest challenge.





PRINCE ABDULKADIR

CAN SIPAHI



He is the son of Lady Bidar. After getting an excellent education, he was made a pasha with the support of his mother and uncle.

Kept under constant watch because of his debauchery and unpredictable mood-swings, this will make him adopt different political views and go against his father.

Abdulkadir will also fall in love with Melike.





YUSUF

IBRAHIM KENDIRCI



He is Omer's closest friend who saves Sultan from an assassination attempt. He ends up in prison because of his gambling habit, but gets out with Omer's help.

His relationship with Omer becomes rocky when he also falls in love with Melike. Yusuf's jealousy of Omer causes him to go over to the enemy.





SENIOR CAPTAIN

UMUT KURT



Celal is childhood friends with Ömer and Yusuf. He is hopelessly in love with Naime, Abdülhamid's daughter. He was given a position after earning Abdülhamid's trust, and he rises through the ranks.

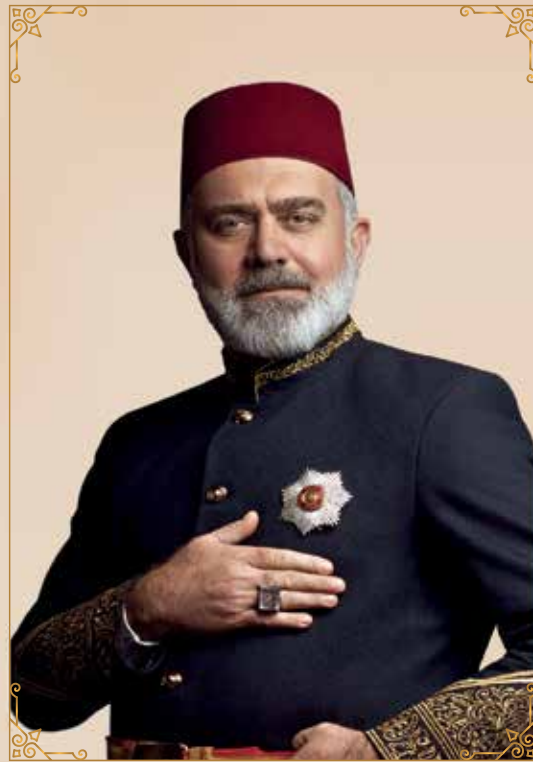
He is Abdülhamid's closest confidant. He would sneak into a palace of a rival monarch in Europe or stab his majesty in the carpenter's shop of the palace.





TAHSIN PASHA

BAHADIR YENIŞEHIRLIOGLU



Calm and loyal, he is Abdülhamid's most trusted man and the chief clerk of the palace. One night, he knocks on Abdülhamid's door and asks him to affix his imperial seal on the railway map, which has been altered by Mahmud Pasha without his approval.

However, Tahsin Pasha will always be on Abdülhamid's side and never let him down.





HATICE SULTAN

GOZDE KAYA



She is the elder daughter of Murad V. Bidar does not like the Sultan treating her like his own daughter. Hatice is in love with Kemalettin Pasha. Yet, he marries the daughter of Abdülhamid, Naime.

Although she gets married to Vasvi Efendi, she would start exchanging letters with Kemalettin.







THE
LAST
EMPEROR

THE LAST EMPEROR



www.trt.com.tr

Aysegul Tuzun
V.P., Sales & Marketing
aysegul.tuzun@misco.tv

Beyza Nur Torun
Sales & Marketing Manager
beyzanur.torun@misco.tv



www.misco.tv